



# ZIP FLUSHMASTER PEARL WS004

## Order Code 41091

Zip FlushMaster® Pearl ceiling recessed infrared urinal flushing system with variable flush cycle to meet your needs precisely.

- Solenoid latching valve supplied with connections
- Variable flush cycle to allow for site requirements
- Catering for long slab troughs and wall-hung urinals
- Battery operated for simple, inexpensive installation
- Optional power pack connects to 220/240 volt AC power

---

Manufacturing Code	41091
--------------------	-------

---



---

Water Pressure	min 100kPa - max 700kPa
----------------	-------------------------

---

Power Supply	Battery 6V Lithium
--------------	--------------------

---

Dimensions	H92mm x D80mm
------------	---------------

---

Product Approvals	WaterMark, CE,
-------------------	----------------

---

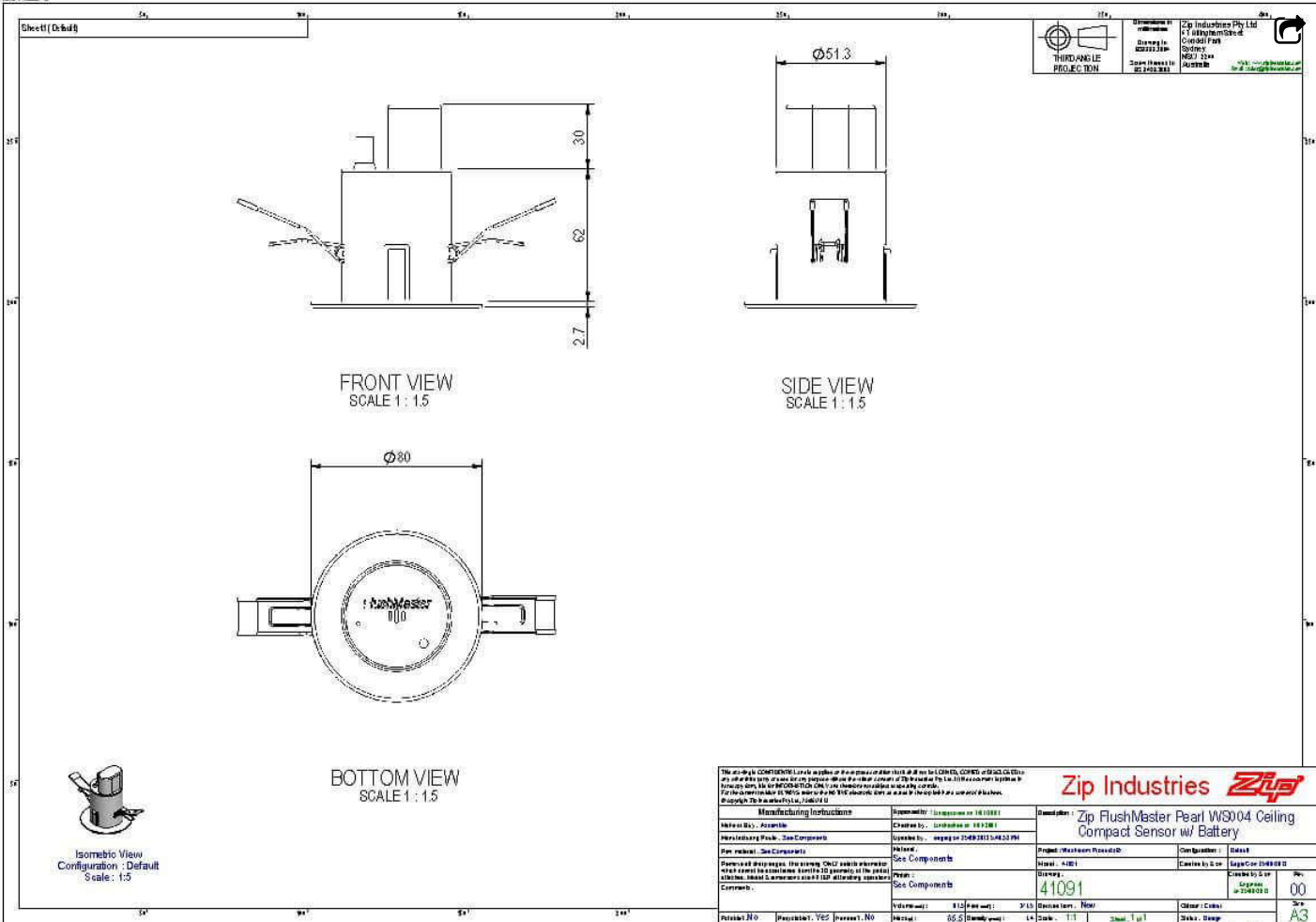
Warranty	1 Year
----------	--------

---

## Installation Requirements

Must be installed by a suitably qualified person in accordance with manufacturers instructions and with all relevant plumbing and electrical regulations

### Installation Detail




**THIRD ANGLE PROJECTION**  
 Drawn by: [Name]  
 Scale: [Scale]  
 Date: [Date]

**Zip Industries Pty Ltd**  
 1/1111111111  
 1/1111111111  
 1/1111111111  
 1/1111111111



<p>The user shall COMPLY with the conditions of the manufacturer's instructions and all other applicable codes and standards. The user shall ensure that the sensor is installed in accordance with the manufacturer's instructions. The user shall ensure that the sensor is installed in a location that is suitable for the sensor's operation. The user shall ensure that the sensor is installed in a location that is suitable for the sensor's operation.</p>		<p><b>Zip Industries</b> </p> <p><b>Zip FlushMaster Pearl WS004 Ceiling Compact Sensor w/ Battery</b></p>	
<p><b>Manufacturing Instructions</b></p> <p>Information: Assembly</p> <p>Manufacturing Point: See Components</p> <p>Plan released: See Components</p> <p>Revised drawings: The drawing shall include all revisions which apply to the drawing. The user shall ensure that the drawing is up to date. The user shall ensure that the drawing is up to date.</p> <p>Comments:</p>	<p>Approved by: [Name]</p> <p>Checked by: [Name]</p> <p>Issued by: [Name]</p> <p>Revision: [Number]</p> <p>Scale: [Scale]</p> <p>Material: [Material]</p> <p>Quantity: [Quantity]</p> <p>Unit: [Unit]</p> <p>Notes: [Notes]</p>	<p>Quantity: [Quantity]</p> <p>Material: [Material]</p> <p>Unit: [Unit]</p> <p>Notes: [Notes]</p>	<p>Item Number: [Number]</p> <p>Item Name: [Name]</p> <p>Item Description: [Description]</p> <p>Item Status: [Status]</p> <p>Item Location: [Location]</p> <p>Item Date: [Date]</p> <p>Item Price: [Price]</p>